



Winner of The
German Sustainable
Building Council
Award



BIO
werkz

CLOSING LOOPS

SPIN-OFF



PROBLEM

construction and furniture industries are major contributors to environmental pollution and deforestation issues



2 BILLION trees are cut each year for construction and furniture products



2.2 BILLION tons of construction and furniture waste will be generated by 2025



40% of world's carbon emissions are caused by the construction sector

SOLUTION

NEWood is an innovative **mycelium-based** biocomposite made for construction and furniture industry using only **organic Waste & Mycelium**



IP No. 10201905895Y
IPO Singapore



PRODUCT BENEFITS

NEWood offers the following unique benefits in comparison to particleboard, MDF and OSB

Particleboard, MDF and OSB	Parameters Of Comparison	NEWood
✗	Biobased	✓
✓	Low to high density	✓
✓	Insulative properties	✓
✓	Diverse strength classes	✓
✓	Cost-effectiveness	✓
✗	CO2-neutral	✓
✗	Recyclable	✓
✗	Production cycle	✓

MARKET SIZE

340 b €

TOTAL ADDRESSABLE MARKET

Global EWPs market size:
340 billion €
in 2022
(CAGR~7.8%)

SERVICEABLE ADDRESSABLE MARKET

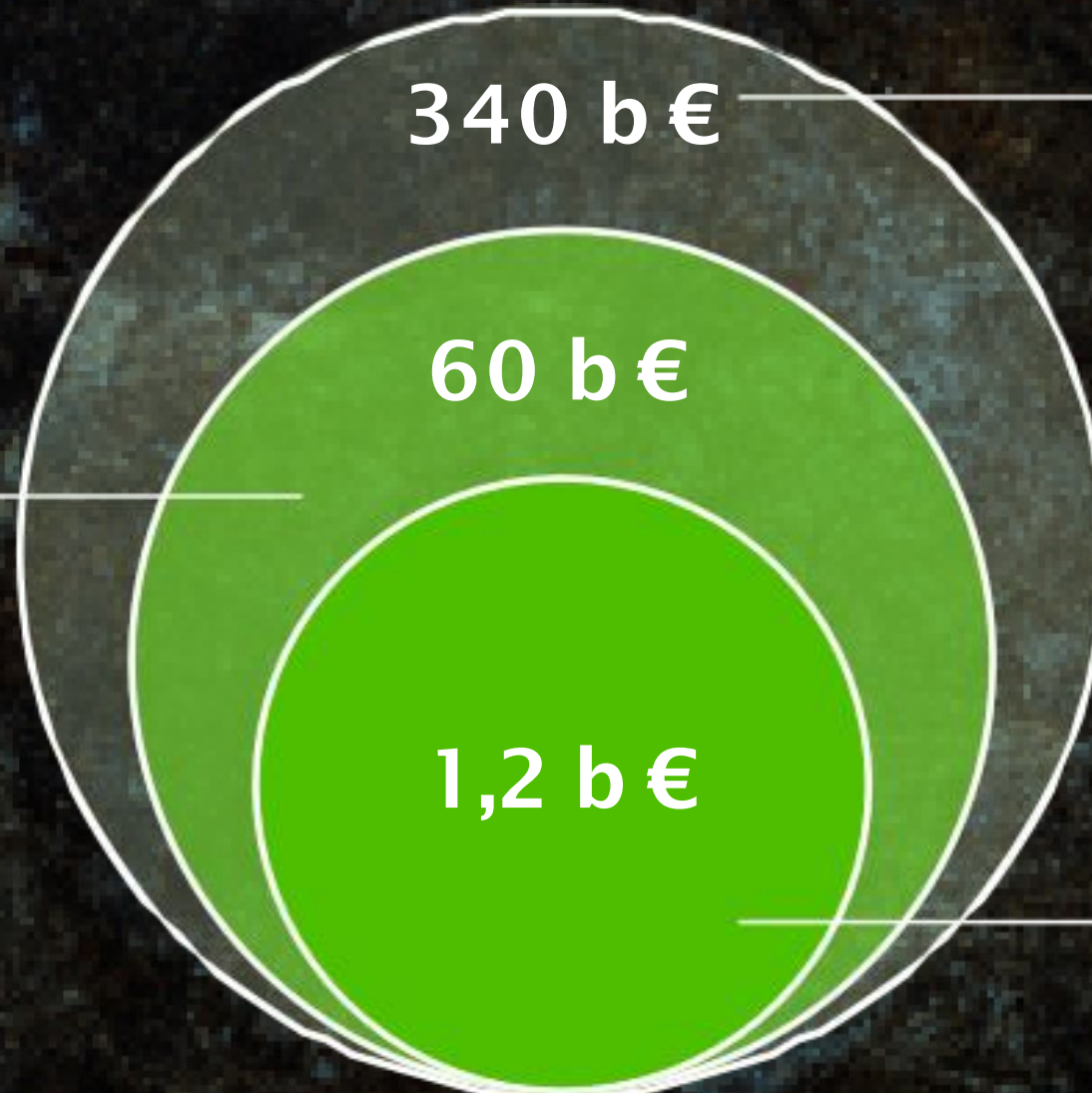
60 b €

Particleboard +
MDF + OSB
60 billion €

SERVICEABLE OBTAINABLE MARKET

1,2 b €

2% market share =
1,2 billion €

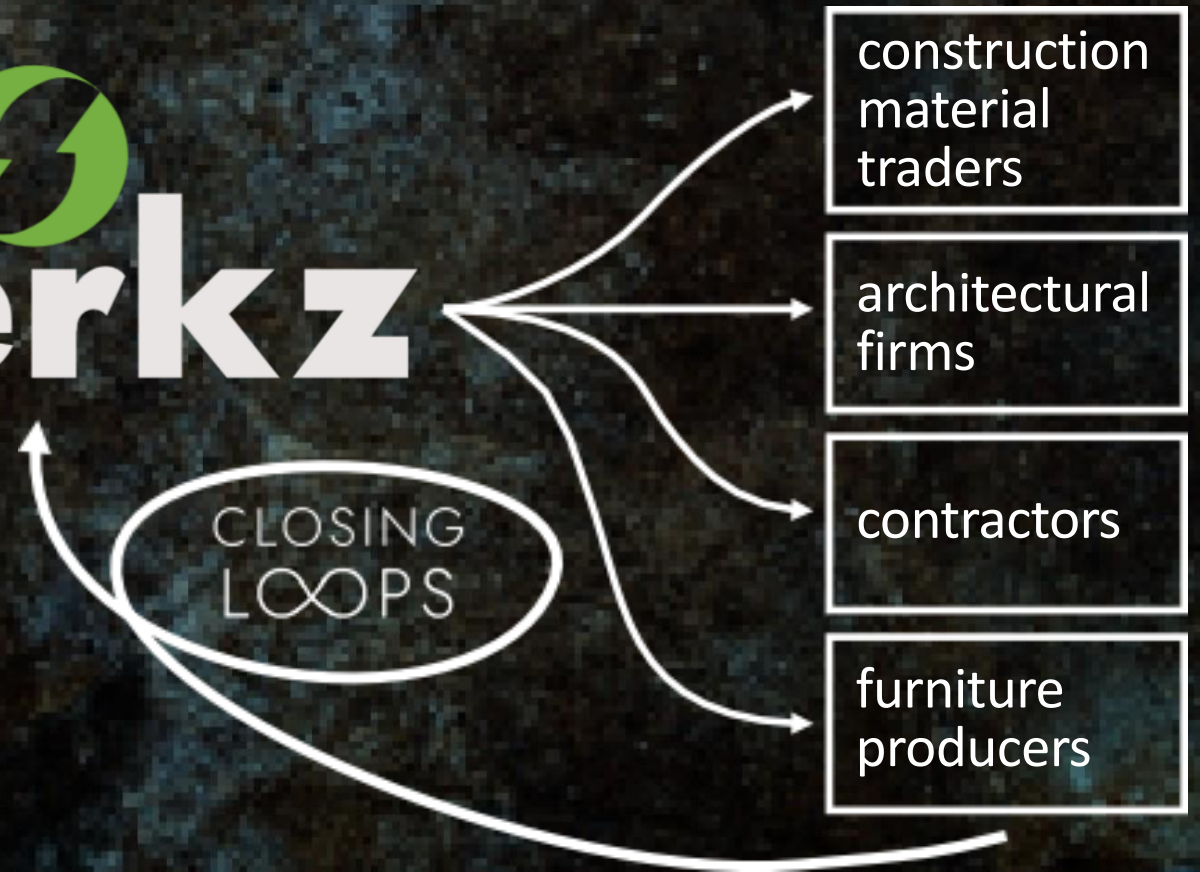


BUSINESS MODEL (B2B)

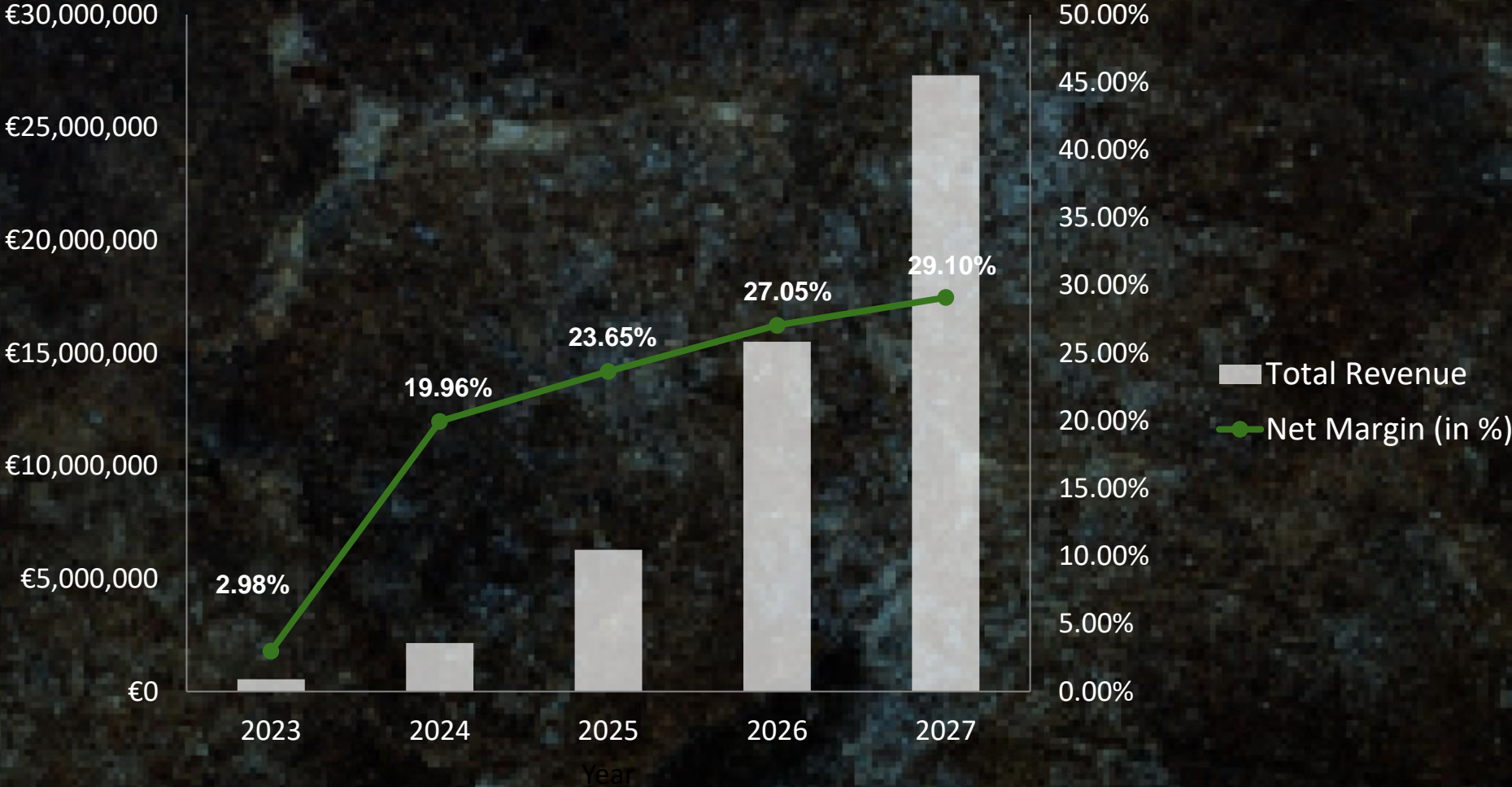
SUPPLY CHAIN



ROUTE-TO-MARKET

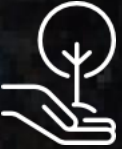



REVENUE PROJECTIONS



IMPACT INDICATORS

ENVIRONMENTAL

 **~30,000**
trees saved

 **~680,000**
tons of CO₂
saved

SOCIAL

 **~4,000,000**
Euro income
increase for
farmers

 **~200**
jobs created

ECONOMIC

 **~20%**
reduction in
waste disposal
operational costs

~ 21,000,000
Euro saving in
carbon tax

8 DECENT WORK AND
ECONOMIC GROWTH



9 INDUSTRY, INNOVATION
AND INFRASTRUCTURE



11 SUSTAINABLE CITIES
AND COMMUNITIES



12 RESPONSIBLE
CONSUMPTION
AND PRODUCTION



15 LIFE
ON LAND

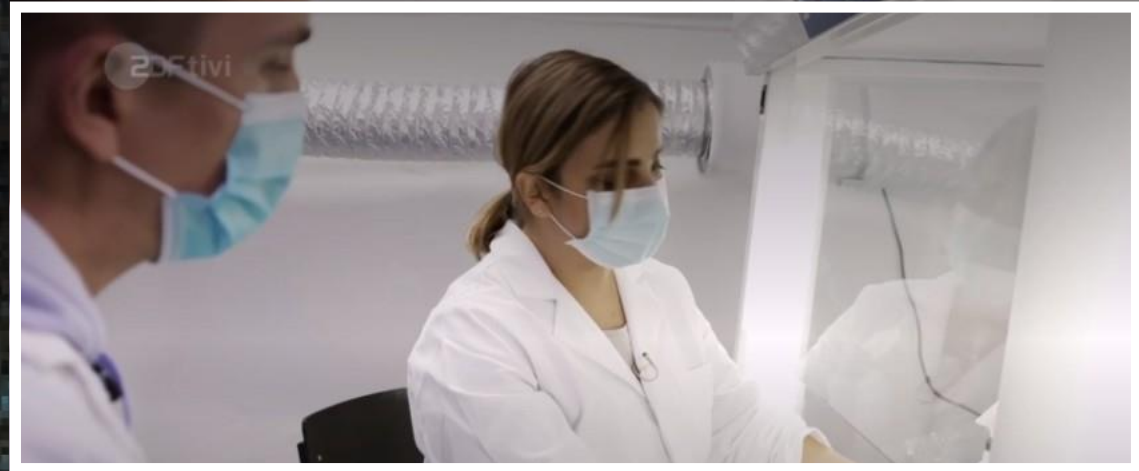


PROOF OF CONCEPT BATAM, INDONESIA

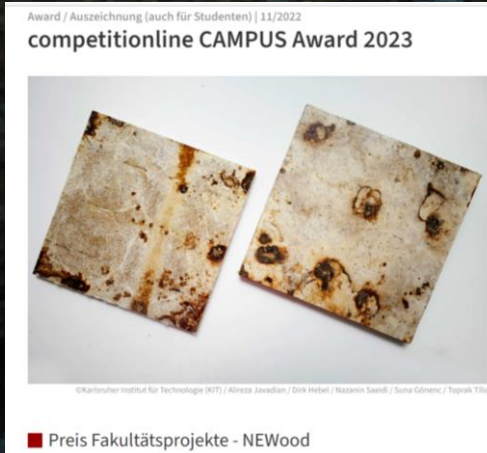


AWARDS AND RECOGNITION

Featured by **ZDF, ARTE** and **WDR** TV Programs



Winner of the Sustainability Challenge of the German Sustainable Building Council (DGNB) 2022



Winner of Competitionline campus award 2023



Winner of Sparkasse bank environmental foundation award 2023

THE TEAM



Dr. Nazanin Saeidi
CEO
PhD Chemical Engineering



Sofiia Vinnik
Product Design Lead
BS.c Architecture



Xin Ying Chan
CTO
MS.c Mechanical Engineering



Yean Chau Ong
COO
MEng Civil & Environmental Engineering



Dr. Alireza Javadian
R&D Lead
PhD Architecture and Construction,
MBA (Marketing)

ADVISORS



Prof Dirk E. Hebel

Scientific Advisor

Professor of Sustainable
Construction, KIT, Germany



**Prof Hortense Le
Ferrand**

Scientific Advisor

Professor of Material Science and
Engineering, NTU, Singapore



Egon Förster

Business Advisor

Fiber Engineering GmbH,
Germany

THANK YOU

BIO
werkz
CLOSING LOOPS



KIT
Karlsruher Institut für Technologie

SPIN-OFF